

# AMENDED

GIA:

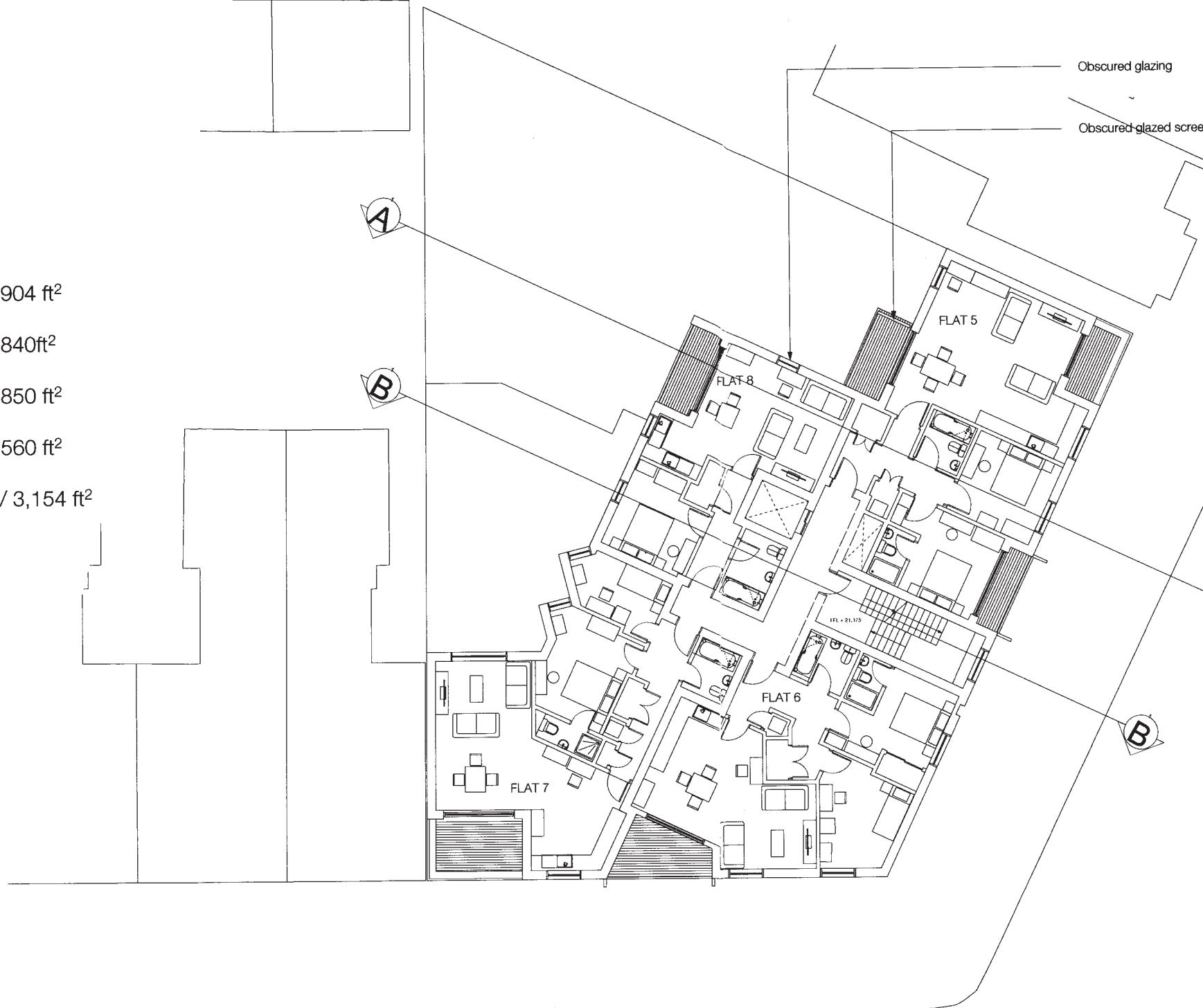
FLAT 5: 84m<sup>2</sup> / 904 ft<sup>2</sup>

FLAT 6: 78m<sup>2</sup> / 840ft<sup>2</sup>

FLAT 7: 79m<sup>2</sup> / 850 ft<sup>2</sup>

FLAT 8: 52m<sup>2</sup> / 560 ft<sup>2</sup>

TOTAL: 293m<sup>2</sup> / 3,154 ft<sup>2</sup>



Second Floor Plan

Revisions

Rev B : 15.08.14  
- Amendment to Flat 7 windows

Rev C : 15.08.14  
- Scale bar and North arrow added

Rev D : XX.08.14  
- Flat 2 layout amended to move living room door

Rev E : 03.09.14  
- Amendments to meet lifetime homes requirements  
- Amendments to balcony fronts to be glazed  
- Obscured glazing annotation added

Rev F : 04.09.14  
- Revised Data

Rev G : 05.09.14  
- Minor Amendments

Rev H : 10.09.14  
- Minor Amendments. Section lines added

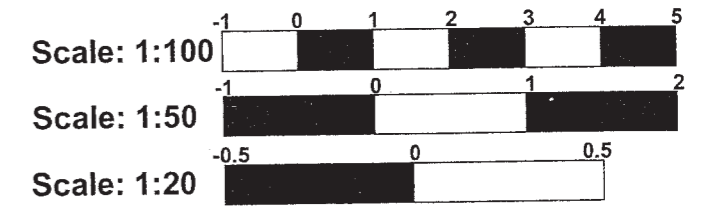
Rev J : 20.01.15  
At request of Merton Principal Planning Officer:  
Flat 5 Rear facing balcony length reduced  
Flat 8 1 no. West facing window omitted

project 298 Haydon's Road, SW19  
for TLS Investments  
site Second Floor Plan  
scale 1:200 @ A3 / 1:100 @ A1  
drawing no. 2291\_PL\_102J

Richard Partridge Architects  
Unit G, Reliance Wharf  
Hertford Road  
London W11 5EY  
T: 020 2241 7770  
E: rpa@rpaarchitects.co.uk  
W: www.rpaarchitects.co.uk



# AMENDED



South Elevation:  
Rear of Building

revisions

Rev A: 11.09.14 Revised Context

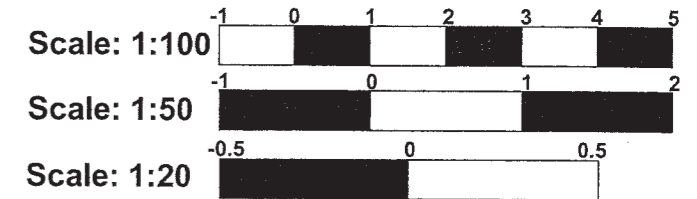
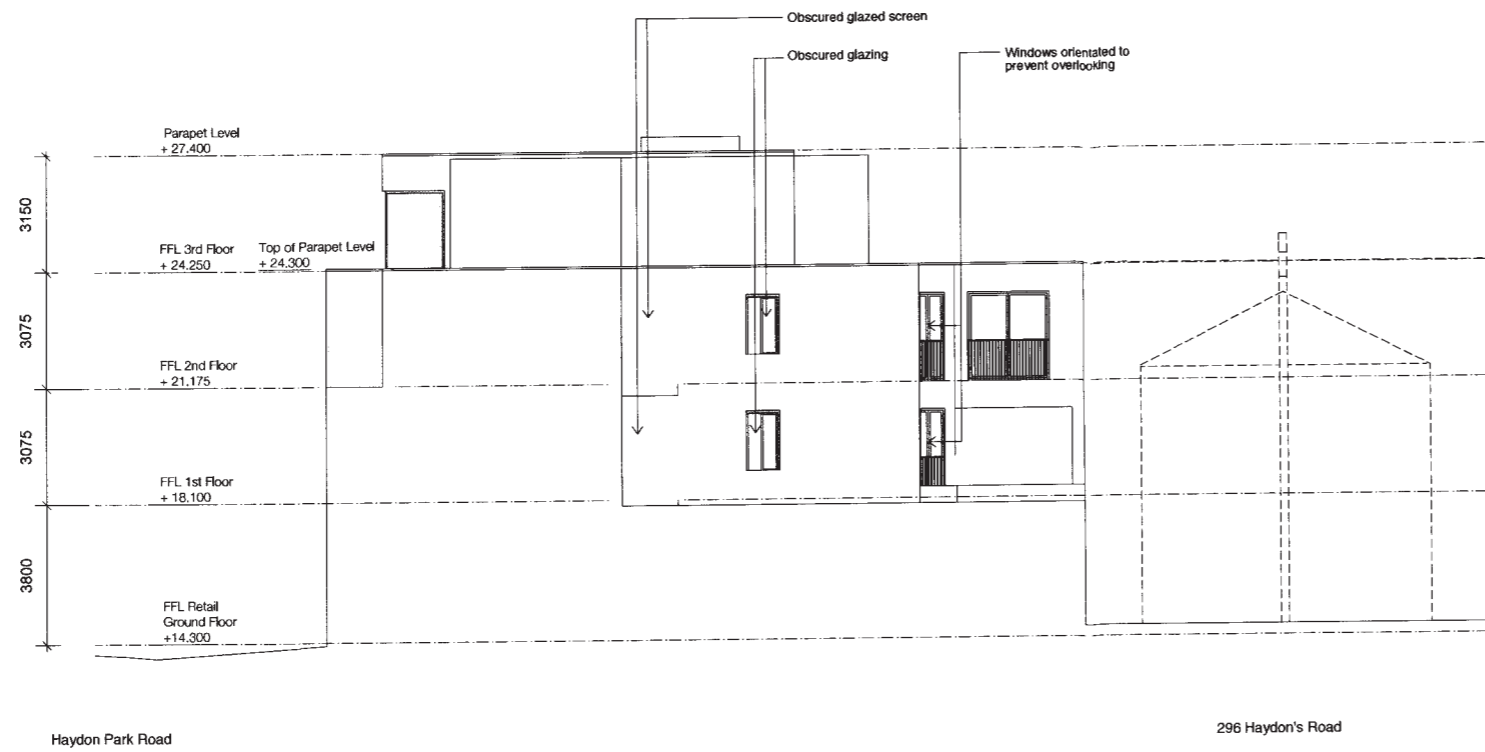
Rev B: 20.01.15 At request of Merton Principal Planning Officer:  
Flats 1 + 5: Rear facing balcony length reduced, depth extended  
Flats 4 + 8: West facing window omitted

project 299 Haydon's Road, SW19  
 for TLS Investments  
 title South Elevation  
 scale 1:200 @ A3 / 1:100 @ A1  
 drawing no. 2291\_PL\_402B

Richards Partridge Architects  
 Unit G Pellence Wharf  
 Herford Road  
 London N1 5EW  
 T 020 7241 7770  
 E info@rpaarchitects.co.uk  
 www.rpaarchitects.co.uk



# AMENDED



West Elevation:



Rev - : 12.09.14 First Issue

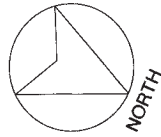
Rev A: 20.01.15 At request of Merton Principal Planning Officer:  
Flats 1 + 5: Rear facing balcony length reduced, depth extended  
Flats 4 + 8: West facing window omitted

project 296 Haydon's Road, SW19  
for TLS Investments  
site West Elevation  
scale 1:200 @ A3 / 1:100 @ A1  
drawing no. 2291\_PL\_403A

Richard Partington Architects  
Unit G Reliance Wharf  
Herford Road  
London, N11 5EW  
T: 020 7241 7770  
E: post@rpaarchitects.co.uk  
www.rpaarchitects.co.uk



*West Elevation - Amended.*



GIA:

FLAT 1: 89m<sup>2</sup> / 958 ft<sup>2</sup>

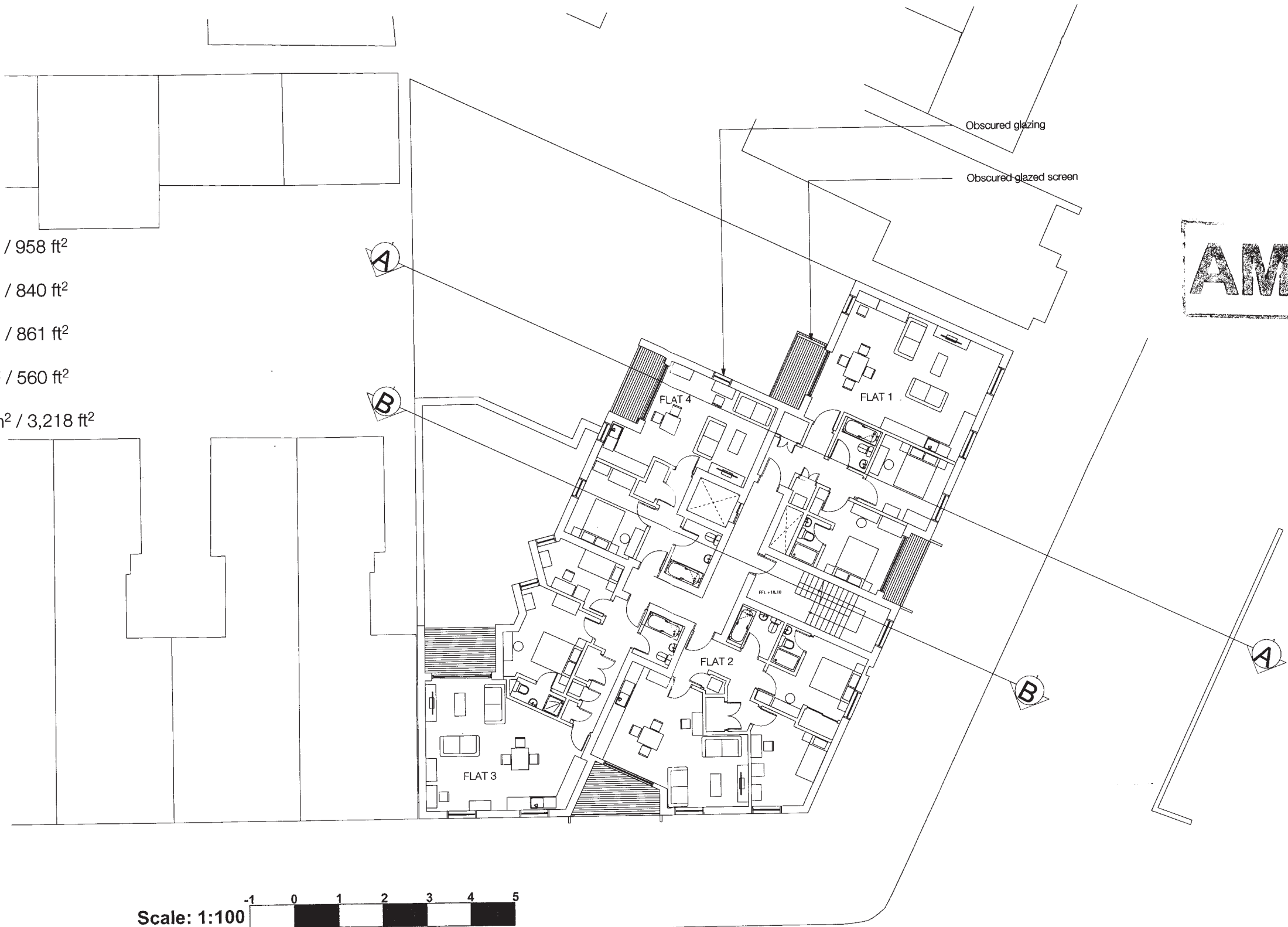
FLAT 2: 78m<sup>2</sup> / 840 ft<sup>2</sup>

FLAT 3: 80m<sup>2</sup> / 861 ft<sup>2</sup>

FLAT 4: 52m<sup>2</sup> / 560 ft<sup>2</sup>

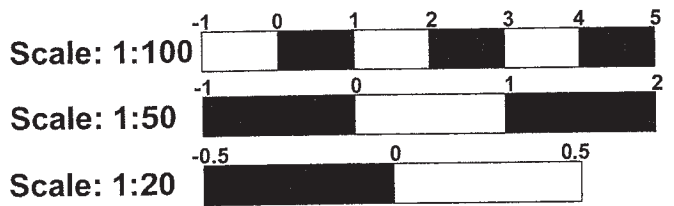
TOTAL: 299m<sup>2</sup> / 3,218 ft<sup>2</sup>

# AMENDED



Page 14

First Floor Plan



- Rev B : 15.08.14  
- Amendment to Flat 3 windows
- Rev C : 15.08.14  
- Scale bar and North arrow added
- Rev D : XX.08.14  
- Flat 2 layout amended to move living room door
- Rev E : 03.09.14  
- Amendments to meet lifetime homes requirements  
- Removal of balcony from flat 1  
- Obscured glazing annotations added
- Rev F : 04.09.14  
- Revised Data
- Rev G : 05.09.14  
- Minor Amendments
- Rev H : 10.09.14  
- Minor Amendments. Section lines added
- Rev J : 20.01.15  
At request of Merton Principal Planning Officer:  
Flat 1 Rear facing balcony length reduced  
Flat 4 1 no. West facing window omitted

notes

project: 289 Haydon's Road, SW19  
 client: TLS Investments  
 title: First Floor Plan: Option 2  
 scale: 1:200 @ A3 / 1:100 @ A1  
 drawing no.: 2291\_PL\_101J

Richards Partington Architects  
 Unit 8 Balance Wharf  
 Hertford Road  
 London N1 5EW  
 T 020 7241 7770  
 E post@rpaarchitects.co.uk  
 W www.rpaarchitects.co.uk



1st Floor, Amended.